

Higher Efficiencies

UP TO 13 SEER



**NATIONAL
COMFORT
PRODUCTS**

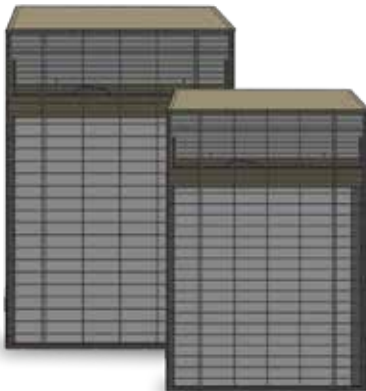
HEATING & A/C EQUIPMENT

Thru-the-Wall Comfort for all types of Multi-Family Construction



Split System Heat Pumps

*All Units Meet DOE Energy Standards**



NHPA Series
3000 | 5000

*Please consult the DOE Compliance Certification Database (<https://tinyurl.com/NCPHeatPumps>) for a list of rated combinations of indoor and outdoor units. Combinations of outdoor and indoor units that are not rated will require factory testing and listing with DOE. Please consult the factory.

Features

- Units are compatible with NCP Air Handlers or certain other air handlers with ECM motors*
- 3000 Series available in 1.5 and 2.0 Ton Sizes, 12 SEER, 7.4 HSPF
- 5000 Series available in 1.5, 2.0 and 2.5 Ton Sizes, up to 13 SEER, 7.6 HSPF
- Heavy-Duty, Water Resistant Cabinet
- R-410A High Efficiency Compressor
- Easy Access Control Box
- Easy Access to Condenser Fan
- Long-Life Fan Motor
- High Efficiency Condenser Coil
- Brass Service Valves

Why Thru-the Wall?

- Easily serviced in any weather
- Less expensive installations
- Ground clutter elimination
- No theft or vandalism
- Less refrigerant charge
- No roof penetration
- Short copper tube runs
- Separate meter savings
- Better appearance

Go Thru-the-Wall



HEATING & A/C EQUIPMENT

National Comfort Products

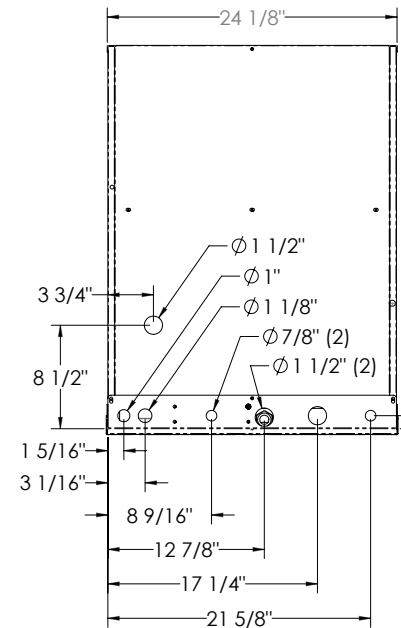
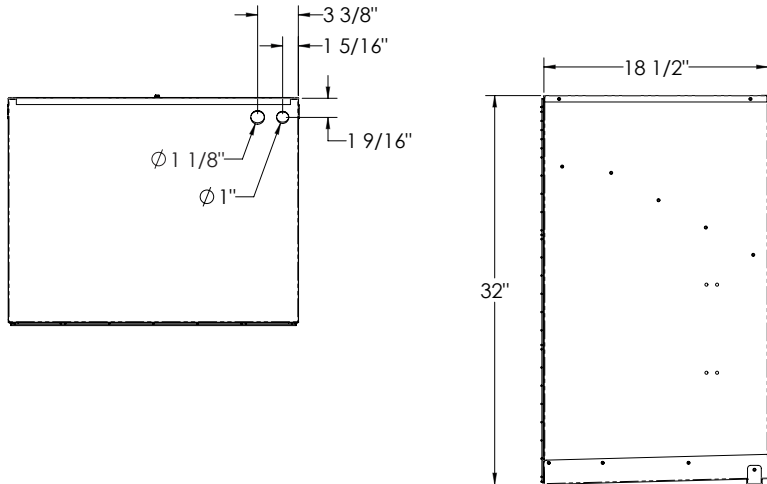
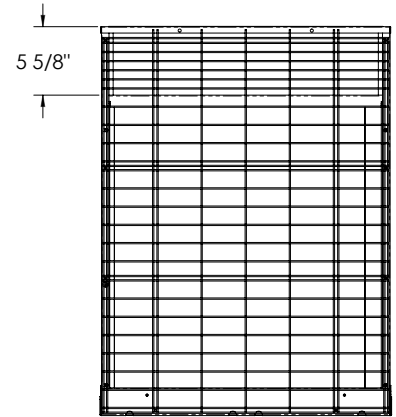
A Division of National Refrigeration and Air Conditioning Products, Inc.

539 Dunksferry Road • Bensalem, PA 19020-5908
(800) 523-7138 • Fax (215) 639-1674

www.nationalcomfortproducts.com

NHPA Series Split System Heat Pumps

3000 Series 12 SEER, 7.4 HSPF						
All units 208/230V 1Ph 60Hz - 180 lbs						
Model	Rated Cooling Capacity (Btu/h)	Rated Heating Capacity (Btu/h)	Compressor		MCA	MOP
			RLA	LRA		
NHPA-418-3019	18,200	@ 47°F - 16,100	9.0	56.3	14	20
		@ 35°F - 13,300				
		@ 17°F - 9,900				
NHPA-424-3019	22,200	@ 47°F - 19,000	10.9	62.9	16	25
		@ 35°F - 14,200				
		@ 17°F - 11,400				
Cond. Fan Motor Specs	1/4 HP, 1600 RPM, 1.3 FLA					
Condenser Coil Specs	3.43 ft ² Face Area, 16 FPI					
Dimensions	24 1/8" W x 32" H x 18 1/2" D					
Liquid Valve	3/8"		Suction Valve		3/4"	

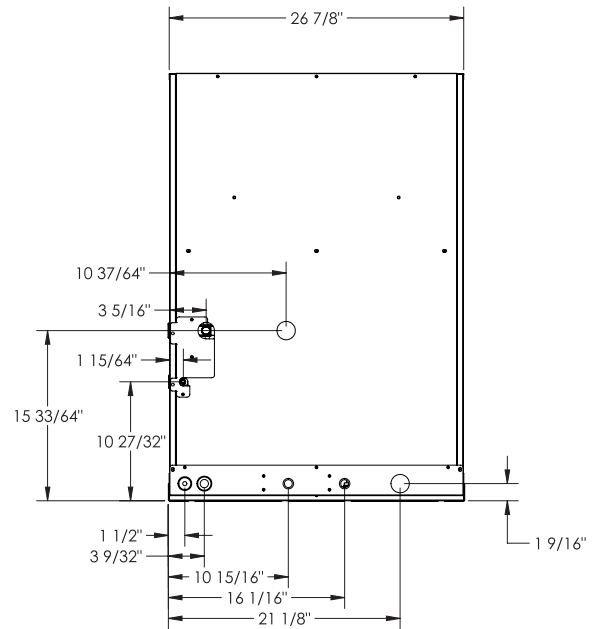
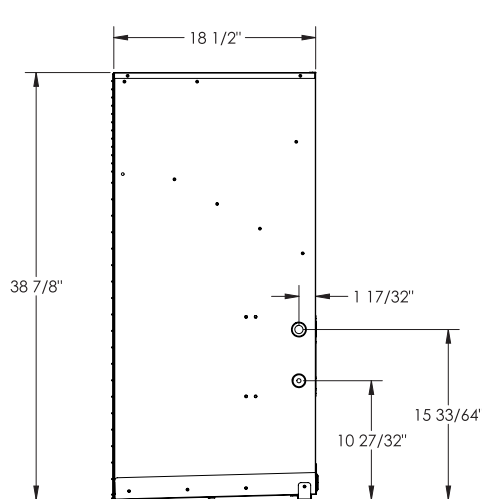
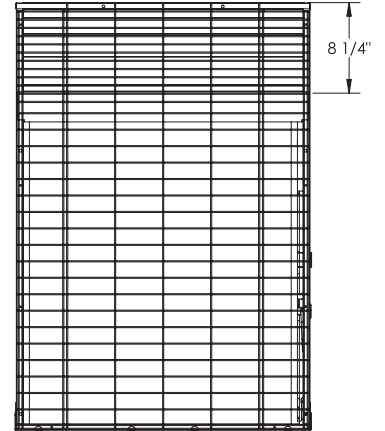


NHPA Series Split System Heat Pumps

5000 Series up to 13 SEER, 7.6 HSPF

All units 208/230V 1Ph 60Hz - 190 lbs

Model	Rated Cooling Capacity (Btu/h)	Rated Heating Capacity (Btu/h)	Compressor		MCA	MOP
			RLA	LRA		
NHPA-418-5019	18,000	@ 47°F - 15,500	9.0	56.3	14	20
		@ 35°F - 13,400				
		@ 17°F - 9,700				
NHPA-424-5019	22,800	@ 47°F - 21,400	10.9	61.6	16	25
		@ 35°F - 18,000				
		@ 17°F - 13,600				
NHPA-430-5019	26,800	@ 47°F - 23,600	12.8	67.8	19	30
		@ 35°F - 18,400				
		@ 17°F - 14,300				
Cond. Fan Motor Specs	1/5 HP, 1650 RPM, 1.8 FLA					
Condenser Coil Specs	4.49 ft ² Face Area, 15 FPI					
Dimensions	26 7/8" W x 38 7/8" H x 18 1/2" D					
Liquid Valve	3/8"		Suction Valve		3/4"	





National Comfort Products
A Division of National Refrigeration and Air Conditioning Products, Inc.
539 Dunksferry Road • Bensalem, PA 19020-5908
(800) 523-7138 • Fax (215) 639-1674
www.nationalcomfortproducts.com



Spec NHPA 6/2020